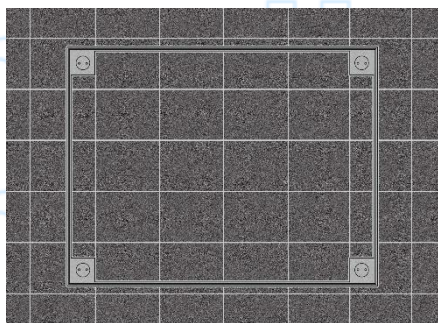
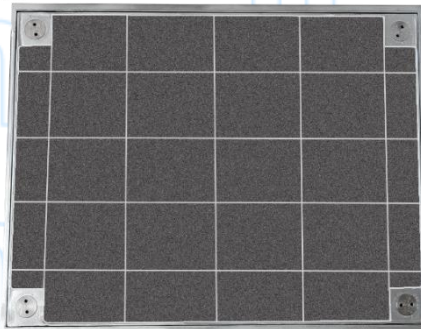


STAINLESS STEEL LIGHT DUTY AIRTIGHT & WATERTIGHT RECESSED COVER & FRAME



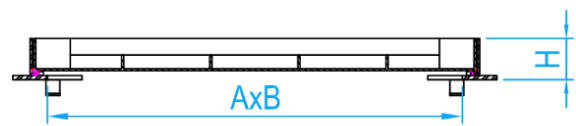
COMPLY WITH BSEN 124:1994
SS30:1999(2012)
BS 9124:2008

Type of Weight (Symbol)	SS30 Grade	Design Load	Place of Installation	EN124	Design Load
	C	30KN	In precincts which are inaccessible to motor vehicles.	A15	30KN

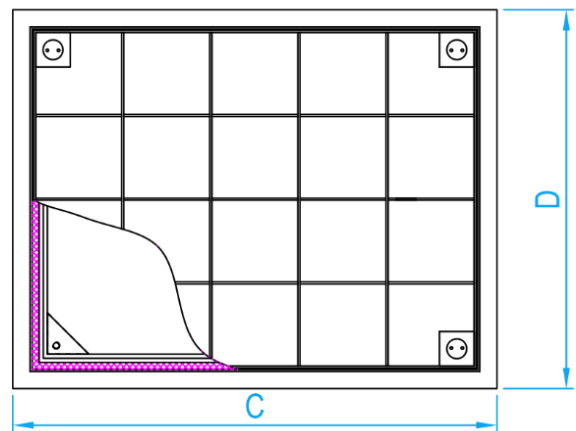


INSTALLATION EFFECT

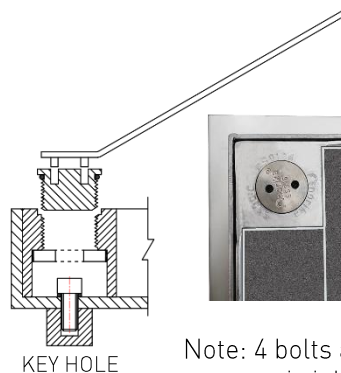
Norika designed keyhole system



SECTION VIEW



TOP VIEW



KEY HOLE



Note: 4 bolts and rubber seal to ensure airtight and watertight.

DIMENSIONS

SKU	MATERIAL	INTERNAL OPENING Ax B (mm)	EXTERNAL CxD (mm)	HEIGHT H (mm)	WEIGHT (kg)	Remarks/ Optional
SSRICCAT	Stainless Steel 304	600x450	700x550	61	24.2	Air / Water Tight
SSRICCAT316L	Stainless Steel 316L	600x450	700x550	61	24.2	Air / Water Tight