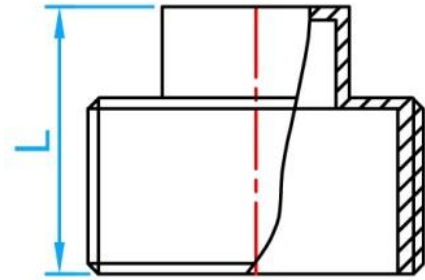
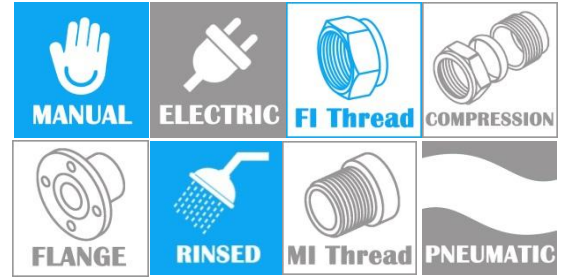


# STAINLESS STEEL 304 THREADED FITTINGS

## SCREW PLUG

COMPLY WITH BSEN1254-2:1998  
AS/NZS 4020:2018



CROSS SECTIONAL VIEW

### DIMENSIONS

SKU	SIZE (inch)	L (mm)	WEIGHT (kg)	PCS/CTN
SS304SP015	½"BSPT	21	0.0257	1500
SS304SP020	¾"BSPT	24	0.0354	500
SS304SP025	1"BSPT	27	0.0583	100
SS304SP035	1¼"BSPT	34	0.1045	100
SS304SP042	1½"BSPT	36	0.1220	100
SS304SP050	2"BSPT	40	0.1923	120
SS304SP065	2½"BSPT	40	0.3055	80
SS304SP080	3"BSPT	44	0.4744	60
SS304SP100	4"BSPT	59	0.8450	10