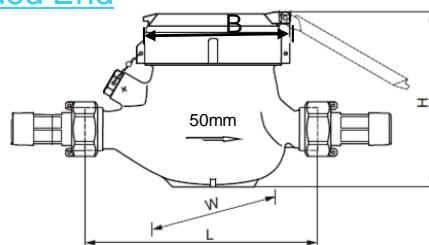


# MULTI JET/DUCTILE IRON WOLTMAN DRY DIAL COLD WATER METER

COMPLY WITH ISO 4064: 2014

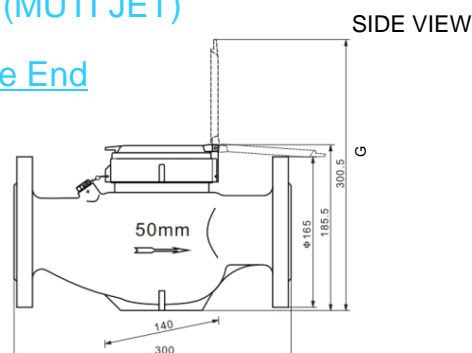


## Threaded End



## WMN50-MJ (MULTI JET)

## Flange End



- 1.Colour ---Grey.
- 2.Information on the lid—
  - (a) Water meter usage monitoring purpose
  - (b) Date of installation and
  - (c) Remark.

## STANDARD SPECIFICATIONS

Water Temperature 0 ~ 30°C

Operating Pressure ≤ 1.6Mpa

## WMN50F-MJ (WOLTMAN)

SIDE VIEW

## COMPONENT PARTS

ITEM	PARTS	MATERIAL
1	Lid	Plastic
2	Sealed Register	ABS
3	Sealing Ring	Brass
4	Body	WMN050-MJ: Brass WMN050F-MJ: Ductile Iron
5	Multi Jet Impeller	Plastic

## FLOW RATE SPECIFICATIONS

SKU	QS Maximum flow rate [m³/h]	QP Nominal flow rate [m³/h]	QT Transitional flow rate [l/h]	QMIN Minimum flow rate [l/h]
WMN050-MJ	31.25	25	500	312.5
WMN050F-MJ	31.25	25	500	312.5

## DIMENSIONS

SKU	SIZE(mm)	L(mm)	B(mm)	H(mm)	W(mm)	WEIGHT (kg)	PCS/CTN
WMN050-MJ	50	300	145	177	145	5.51	1

## DIMENSIONS

SKU	SIZE(mm)	L(mm)	H(mm)	G(mm)	Bolt Tightening torque	WEIGHT (kg)	PCS/CTN
WMN050F-MJ	50	300	185	300.5	70	11.2	1

\*1] Ensure water meter is installed in the correct water flow direction.

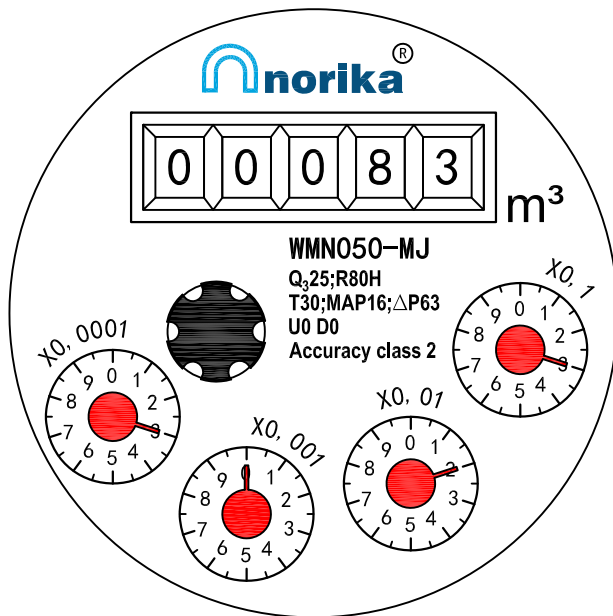
2] Always ensure to select the correct size and spec for the meter.

3] WMN50 meters are only suitable to be installed in the horizontal position. Failing to comply will result in damaging the meter and warranty will be voided.

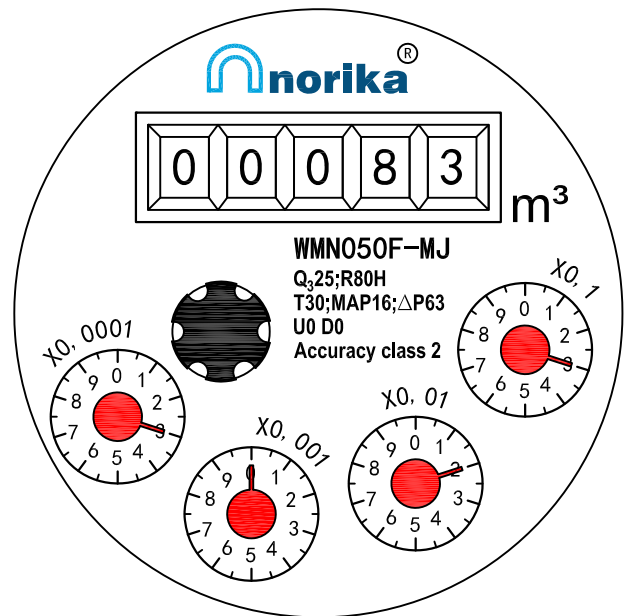
# Water Meter Reading

## 水表读数

WMN050-MJ



WMN050F-MJ



Water meter's Measuring unit is the cubic meter .(  $m^3$  )

Conversion formula is:  $1 m^3 = 1,000$  Litres

For example, Pic on the left, read as:

83.3203 $m^3$  OR 83,320.3 Litres

水表的计量单位为：立方米 ( $m^3$ )

换算公式为:1立方米=1000公升,

即：  $1m^3=1,000$  Litres

以图为例：

水表的读数为 83.3203 $m^3$

换算成公升为 83,320.3 Litres