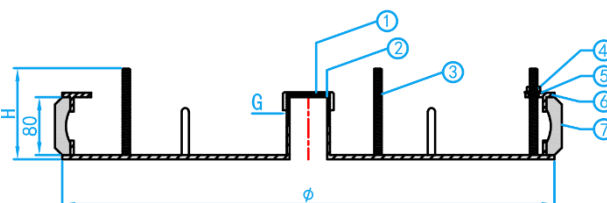
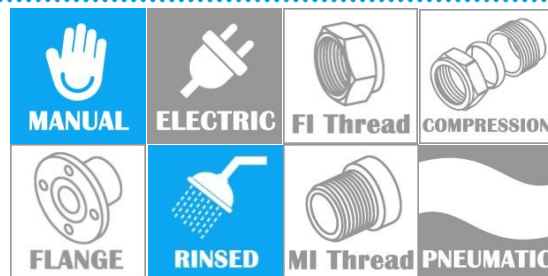


MULTI-LOCK DRAIN TEST PLUGS



CROSS SECTION VIEW

OPERATING INSTRUCTIONS

1	Select the correct size of the plug to suit the internal diameter of the pipe.
2	Remove any grease or foreign material from installation point.
3	Ensure no dirt is trapped between seal of plug and plates.
4	Ensure plug is inserted square to pipe wall.
5	Ensure wing nut and sealing cap are fully tightened.

COMPONENT PARTS

ITEM	PARTS	MATERIAL
1.	Cap	Galvanized Iron
2.	Rubber Washer	Natural Rubber
3.	Screw	Galvanized Iron
4.	Nut	Galvanized Iron
5.	Washer	Galvanized Iron
6.	Plate	Galvanized Iron
7.	Rubber	Natural Rubber

STANDARD SPECIFICATIONS

SKU	SIZE(mm)	G (inch)	H (mm)	Ø (mm)	RANGE MIN/MAX (mm)	WEIGHT (kg)
TP0700	700	2"	126	681	687-713	28.5
TP0750	750	2"	126	731	737-763	32.1
TP0800	800	2"	126	781	787-813	35.2
TP0900	900	2"	126	881	887-913	42.7
TP1000	1000	2"	126	981	987-1013	50.3
TP1050	1050	2"	126	1031	1037-1063	56.0
TP1100	1100	2"	126	1081	1087-1113	60.5
TP1150	1150	2"	126	1131	1137-1163	-
TP1200	1200	2"	126	1181	1187-1213	69.84