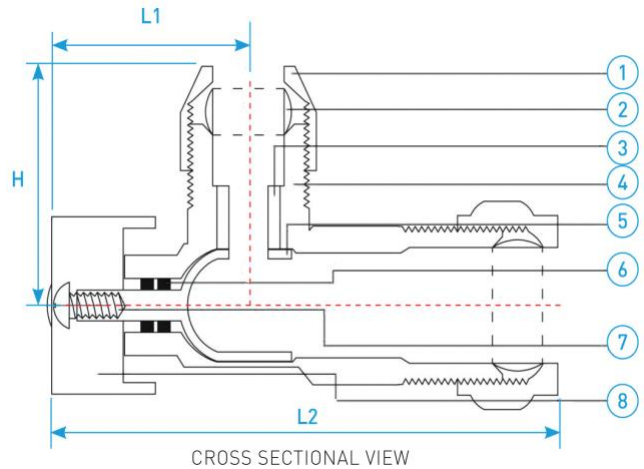
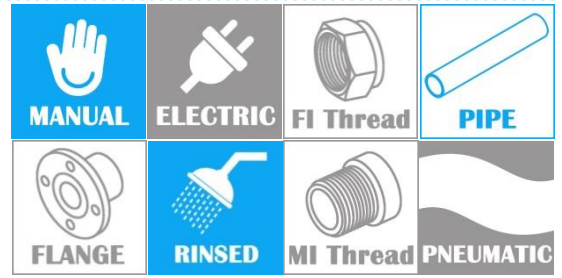


# CHROME PLATED BRASS CR ANGLE BALL VALVE

COMPLY WITH BSEN13828:2003  
BSEN12165: 2011  
AZ/NZS4020:2005



### STANDARD SPECIFICATION

|                   |        |
|-------------------|--------|
| Working Pressure  | 200Psi |
| Applicable Medium | Water  |

### COMPONENT PARTS

| ITEM | PARTS            | MATERIAL                |
|------|------------------|-------------------------|
| 1    | Nut              | DZR Brass               |
| 2    | Compression Ring | Copper                  |
| 3    | Seat Retainer    | DZR Brass               |
| 4    | Body             | Chrome-plated DZR Brass |
| 5    | Ball             | Chrome-plated DZR Brass |
| 6    | Stem Seal        | EPDM                    |
| 7    | Screw            | DZR Brass               |
| 8    | Handle           | DZR Brass               |

### DIMENSIONS

| SKU       | SIZE (mm) | H (mm) | L (mm) | WEIGHT (Kg) | PCS/CTN |
|-----------|-----------|--------|--------|-------------|---------|
| AVCRN1510 | 15 X 10   | 33     | 72     | 0.130       | 100     |
| AVCRN1515 | 15 X 15   | 30     | 70     | 0.135       | 100     |