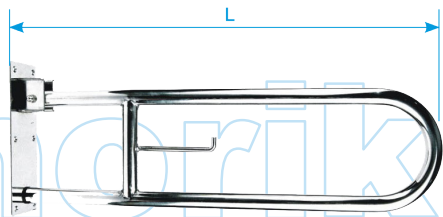


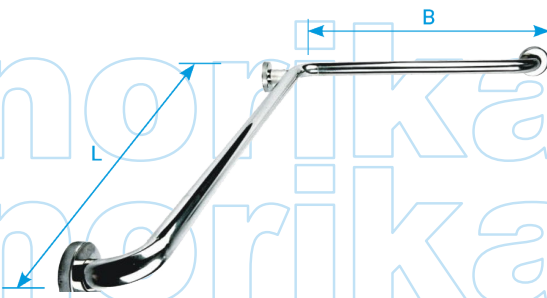
# HANDICAPPED GRAB BAR



TYPE A / B SSGB

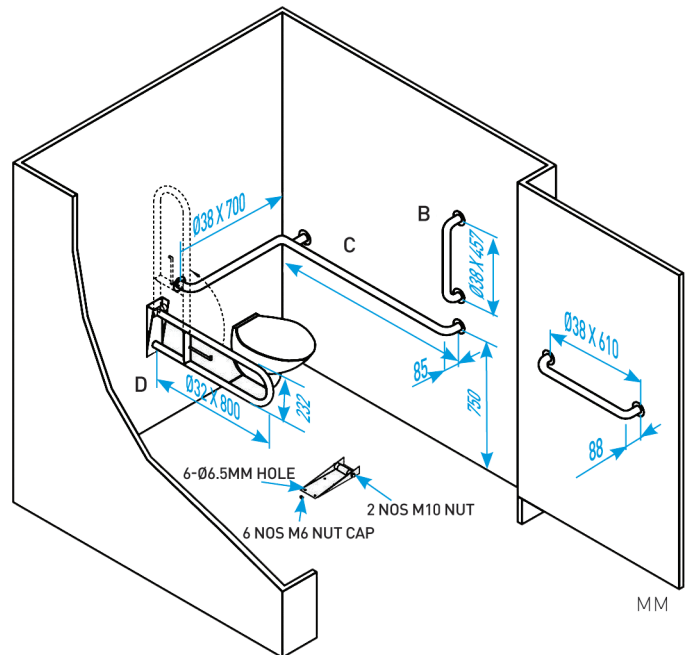


TYPE D SSUGB 800300



TYPE C SSGBL 7001200

GRAB BARS INSTALLATION LAYOUT GUIDE



STANDARD SPECIFICATIONS

STOCK CODE	MATERIAL	LENGTH (mm)	WEIGHT (kg)
SSGB250	AISI304	250	0.45
SSGB300	AISI304	305	0.50
SSGB350	AISI304	350	0.55
SSGB400	AISI304	405	0.59
SSGB450	AISI304	457	0.64
SSGB600	AISI304	610	0.78
SSGB900	AISI304	915	3.00
SSGBL7001200	AISI304	700 (L) x 1200 (B)	1.90
SSUGB800300	AISI304	800 (L) x 300 (B)	2.36