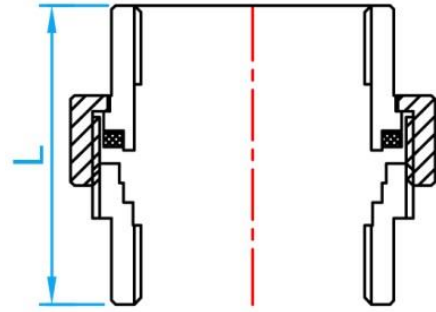


# STAINLESS STEEL 304 FITTINGS

## UNION



CROSS SECTIONAL VIEW

### DIMENSIONS

SKU	SIZE (inch)	L (mm)	WEIGHT (kg)	PCS/CTN
SS304U015	½" BSP	38.5	0.1273	100
SS304U020	¾" BSP	44	0.2094	50
SS304U025	1" BSP	48	0.2757	40
SS304U035	1¼" BSP	52	0.3984	30
SS304U042	1½" BSP	55	0.4719	20
SS304U050	2" BSP	62	0.8210	30
SS304U065	2½" BSP	73	1.2500	7
SS304U080	3" BSP	80	1.755	5