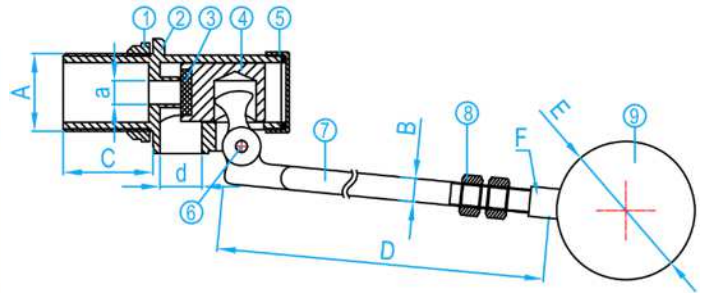


DZR BRASS BALL FLOAT VALVE

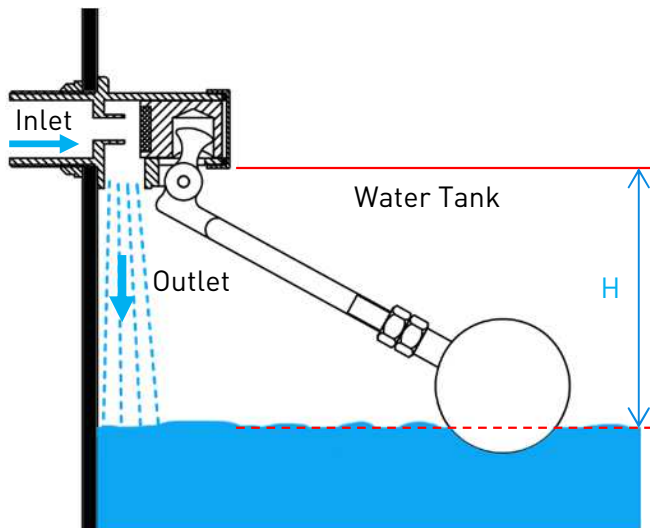
COMPLY WITH BS1212 : PART1 : 1990



Accessories Rubber seal kit:
BFVN015-042RK



CROSS SECTIONAL VIEW



*Note: Rods are customisable

COMPONENT PARTS

ITEM	PARTS	MATERIAL
1	Lock nut	Brass
2	Body	DZR Brass
3	Disc	EPDM
4	Piston	DZR Brass
5	Cap	Brass
6	Pins	AISI304
7	Float Rod	Brass
8	Nut	Brass
9	Ball	AISI304, AISI316 Optional PE (For 15mm, 20mm, 25mm)

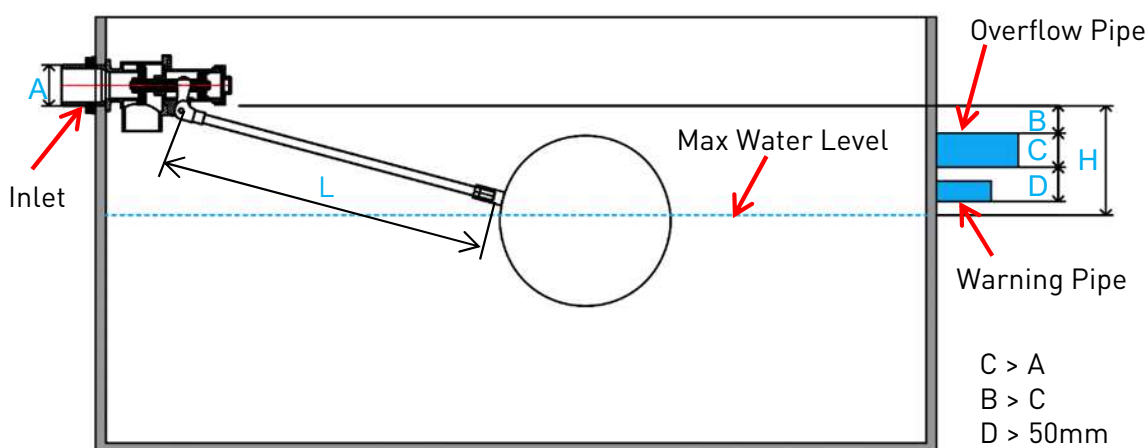
STANDARD SPECIFICATIONS

Working Pressure	14 Bar
Operating Temperature	20° ~ 65°C
Applicable Medium	Water

DIMENSIONS

SKU	A (inch)	a (mm)	B (mm)	C (mm)	d (mm)	D (mm)	Ball SKU E (mm)	F (inch)	Valve Closing Distance H (mm)	WEIGHT (kg)
BFVN015150	1/2"BSP	3	8	35	12.5	150	BFVNB100	5/16"	90	0.48
BFVN015	1/2"BSP	3	8	35	12.5	280	BFVNB100	5/16"	120	0.49
BFVN020	3/4"BSP	8	8	35	15.0	335	BFVNB100	5/16"	60	0.59
BFVN025	1"BSP	10	8	35	18.0	387	BFVNB165	M10	130	1.20
BFVN035	1 1/4"BSP	11	9.8	50	21.0	411	BFVNB200	1/2"	220	2.06
BFVN042	1 1/2"BSP	16	12.4	45	28.0	540	BFVNB200	1/2"	225	2.40

BALL FLOAT VALVE SHUT-OFF LEVELS AND SPECIFICATIONS



ELEVATION / SECTION

DIMENSIONS			
SKU	A Inlet (mm)	L Rod Length (mm)	H (mm)
BFVN015	21	150	120
BFVN015150	21	280	90
BFVN020	27	335	60
BFVN025	33	387	130
BFVN035	42	411	220
BFVN042	48	540	225
BFVN050	60	450	290
BFVN065	75	436	190
BFVN080	88	485	280

DIMENSIONS			
SKU	A Inlet (mm)	L Rod Length (mm)	H (mm)
BFVN100	113	535	400
BFVN1000640	113	640	430
BFVN1000860	113	860	520
BFVN1000900	113	900	540
BFVN1001000	113	1000	570
BFVN1001200	113	1200	610
BFVN150	164	860	390
BFVN1501200	164	1200	510
BFVN1501400	164	1400	570

Singapore Standard SS636

Clause 7.1.5

The overflow pipe shall have an internal diameter larger than that of the inlet pipe. The overflowing level of the overflow pipe shall be below the invert of the inlet pipe at a vertical distance of not less than the diameter of the overflow pipe.

Clause 7.1.6

A Warning alarm shall be provided to effectively indicate when the water reaches a level not less than 50mm below the invert of the overflow pipe.

Clause 7.1.7

Every storage tank shall have its water level set at a vertical distance of not less than 25mm below the warning level

BRASS STUB/LEVER FOR BALL FLOAT VALVE



TYPE A: ROD FOR 1/2" TO 1 1/2" FLOAT VALVE

C: Connect with Ball

D: Connect with chuck

TYPE B: ROD FOR 2" TO 6" FLOAT VALVE

C: Connect with Ball

TYPE B: ROD FOR 2" TO 6" FLOAT VALVE

DIMENSIONS

SKU	C (inch)	D (inch)	L (mm)	WEIGHT (kg)
BFVN050S	1/2"	M13	450	0.520
BFVN065S	1/2"	M13	436	0.575
BFVN080S	7/8"	M22	485	1.605
BFVN100S	7/8"	M22	535	1.780
BFVN100S0640	7/8"	M22	640	2.187
BFVN100S0860	7/8"	M22	860	2.907
BFVN100S0900	7/8"	M22	900	3.027
BFVN100S1000	7/8"	M22	1000	3.357
BFVN100S1200	7/8"	M22	1200	4.007
BFVN100S1400	7/8"	M22	1400	4.650
BFVN150S	7/8"	M24	860	3.295
BFVN150S1200	7/8"	M24	1200	4.789
BFVN150S1400	7/8"	M24	1400	5.560

TYPE A: ROD FOR 1/2" TO 1 1/2" FLOAT VALVE

DIMENSIONS

SKU	C (inch)	L (mm)	WEIGHT (kg)
BFVN015S150	5/16"	150	0.
BFVN015S	5/16"	280	0.130
BFVN020S	5/16"	335	0.145
BFVN025S	M10	387	0.260
BFVN035S	1/2"	411	0.460
BFVN042S	1/2"	540	0.610